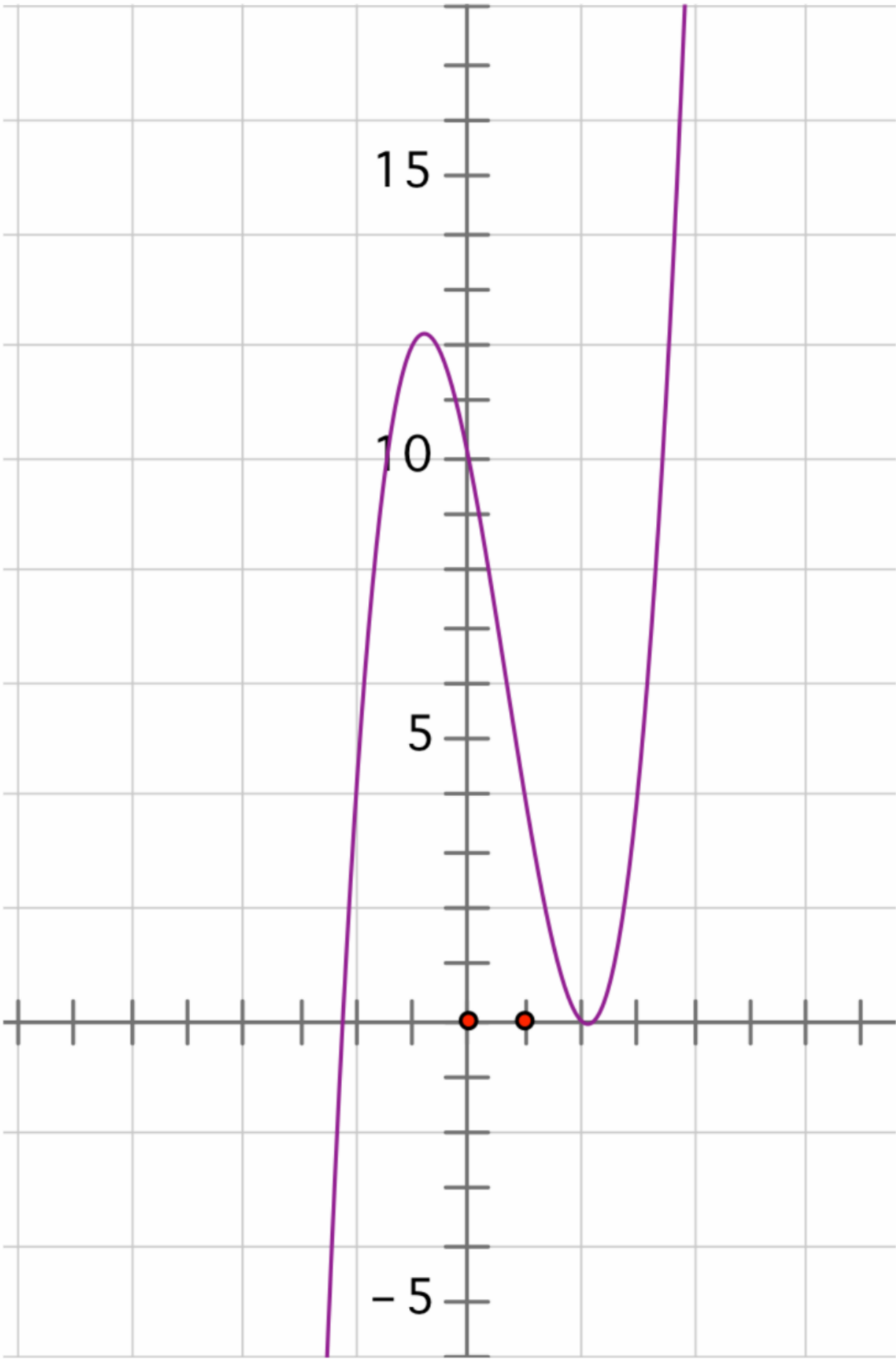
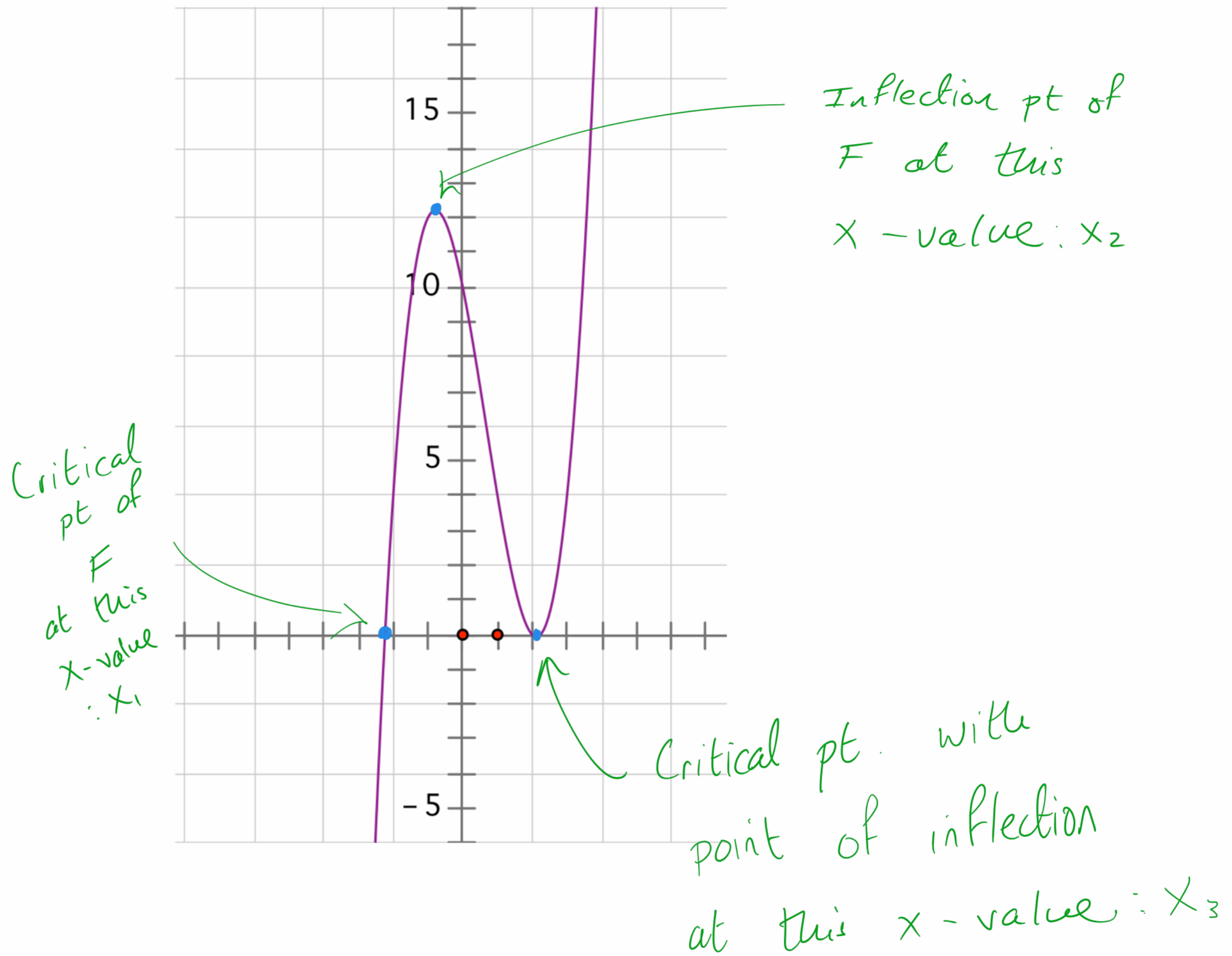


Example The graph of a function $f(x)$ is shown in the diagram below, sketch the graph of an antiderivative of f .

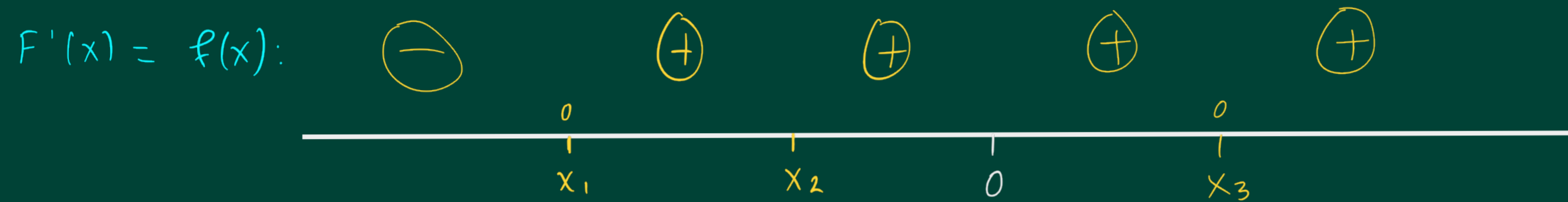


Example The graph of a function $f(x)$ is shown in the diagram below, sketch the graph of an antiderivative of f .



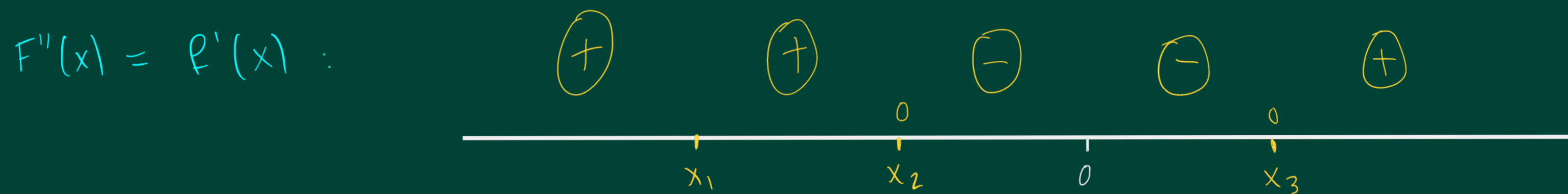
3) Make a numberline with the sign of F' marked in:

(i.e. the sign of f)



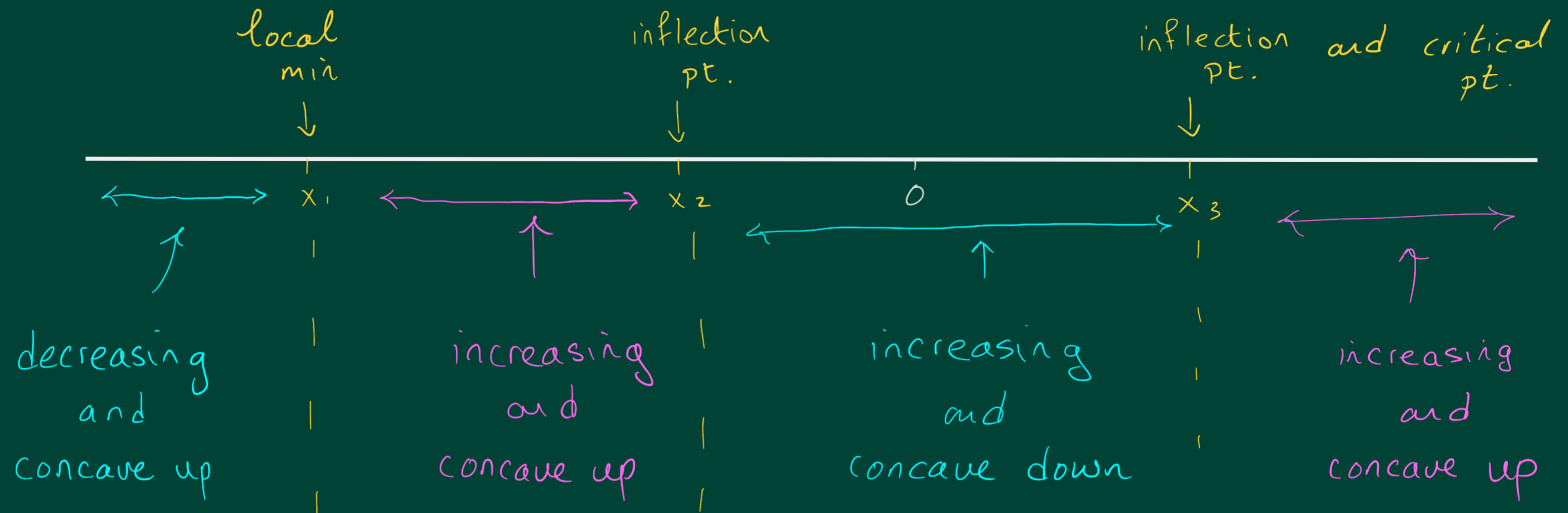
4) Make another numberline with the sign of F'' marked in:

(i.e. the sign of f')



Inflection pts
of F

5) Summarise all of this into one number line:



6) Mark in a point above one of the x -values of interest (at any height you want - it doesn't matter).

Question: Why doesn't it matter?

7) Start drawing \rightarrow making note of the other pts of interest.

